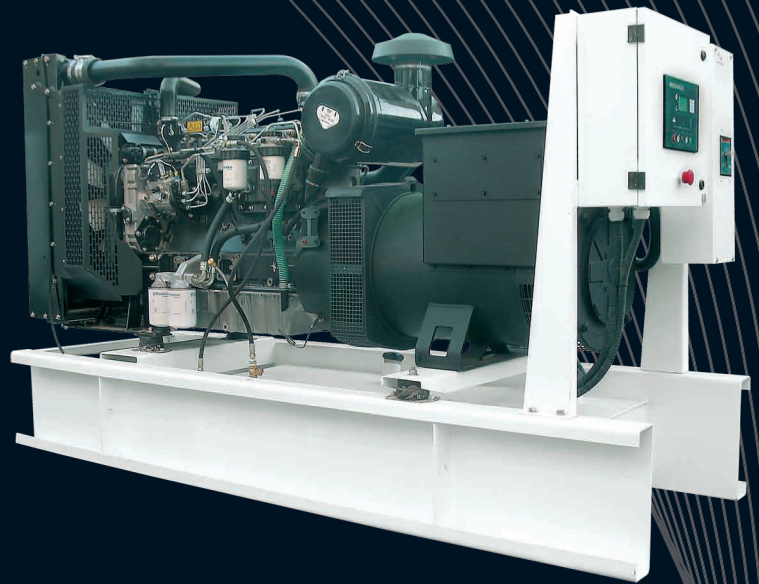




# Power Solution

## PL150



### OUTPUT RATINGS

Generating Set Model - PL150	Prime Power	Standby Power
380 - 415V, 50 Hz / 1500 RPM	150.0 KVA	165.0 KVA
operating Temp 40 C	120.0 Kw	132.0 Kw

### RATINGS DEFINITIONS

**Prime Power :** Variable load Unlimited hours usage with an average load factory of 80% of the published prime power over each 24 hour period. A 10% overload is available for 1 hour in every 12 hours of operation.

**Standby power:** Variable load. Limited to 500 hours annual usage up to 300 hours of which may be continuous running. No overload is permitted.

### TECHNICAL DATA: ENGINE

Engine Model:	Perkins 1006 TAG2
Number of Cylinders:	6 Vertical in-line
Displacement:	5.99 liters
Bore / Stroke: mm (in)	100 X 127 mm
Compression ratio:	17.0:1
Aspiration:	Turbocharger air to air after cooled
Cycle:	4 Stroke
Combustion system	direct injection
Total Coolant Capacity:	41 liters
Total Lubrication System Capacity:	19 liters
Rotation:	Anti Clockwise
Cooling System:	Water - Cooled
Engine Speed:	1500 RPM
Gross Engine Power: Kw (hp)	136.8 (181.0)
Piston Speed: m/sec (ft/sec)	6.35 (20.8)
Fuel Tank Capacity: Liters (US Gal)	300 (79.3)
Fuel Consump, Prime PL150: 1/h (Usg / hr)	41.0 (9.0)
Fuel Consump, Standby PL165: 1/hr (Usg/hr)	45.0 (9.9)

### TECHNICAL DATA: ALTERNATOR

Alternator Model:	LEROY SOMER LSA - 44.2 L12	
Insulation glass:	H	
Winding pitch:	2/3 (N <sup>o</sup> 6)	
Terminals:	12	
Drip proof:	IP23	
altitude:	≤ 1000 m	
Overspeed:	2250 min <sup>-1</sup>	
Air flow:	0.37 m <sup>3</sup> /s (50 Hz) 0.44 (60 Hz)	
Excitation system	SHUNT	AREP or PMG
A.V.R. Model:	R230	R438
Voltage regulation (*):	± 0.5%	± 0.5%
Sustained short-circuit current:	-	300% (3 IN):10s
Total harmonic TGH / THG (**)	at no load < 2% - on load < 2%	
Waveform:NEMA = TIF	< 50	< 50
Wave from: I.E.C = THF	< 2%	< 2%

**Note:** Derating may be required for conditions outside these; consult Perkins Engines Company Limited Generator powers are typical and are based on an average alternator efficiency and a power factor (Cos. φ) of 0.8

**Fuel specification:** BS 2869; part 2 1998 Class A2 or DIN EN 590

**Lubricating oil:** A single or multi grade oil ACEA E1 E2 or API CD/SD

### DIMENSIONS AND WEIGHTS

Length: mm (in)	Width: mm (in)	Height: mm (in)	Dry: Kg (lb)	Wet: Kg (lb)
2675 (105.0)	900 (35.4)	1564 (62)	1460 (3219)	1535 (3384)

**Al-qaswaa group**  
for Power Generating & Heavy Equipment

Dubai, Al Murar, U.A.E.  
Tel: +971.4.2359499  
Fax: +971.4.2359799  
sales@alqaswaa.com  
[www.alqaswaa.com](http://www.alqaswaa.com)